

**1 BEDROOM**

52 sqm / 560 sqft

**Type A1-2**

#02-03 to #35-03

**Type A1-2(h)**

#36-03 (high ceiling)



Note: Plans are not drawn to scale. The above is subject to change as may be approved by the relevant authorities.

**2 BEDROOM**

76 sqm / 818 sqft

**Type B1-2**

#02-02 to #35-02

**Type B1-2(h)**

#36-02 (high ceiling)



Note: Plans are not drawn to scale. The above is subject to change as may be approved by the relevant authorities.

**3 BEDROOM**

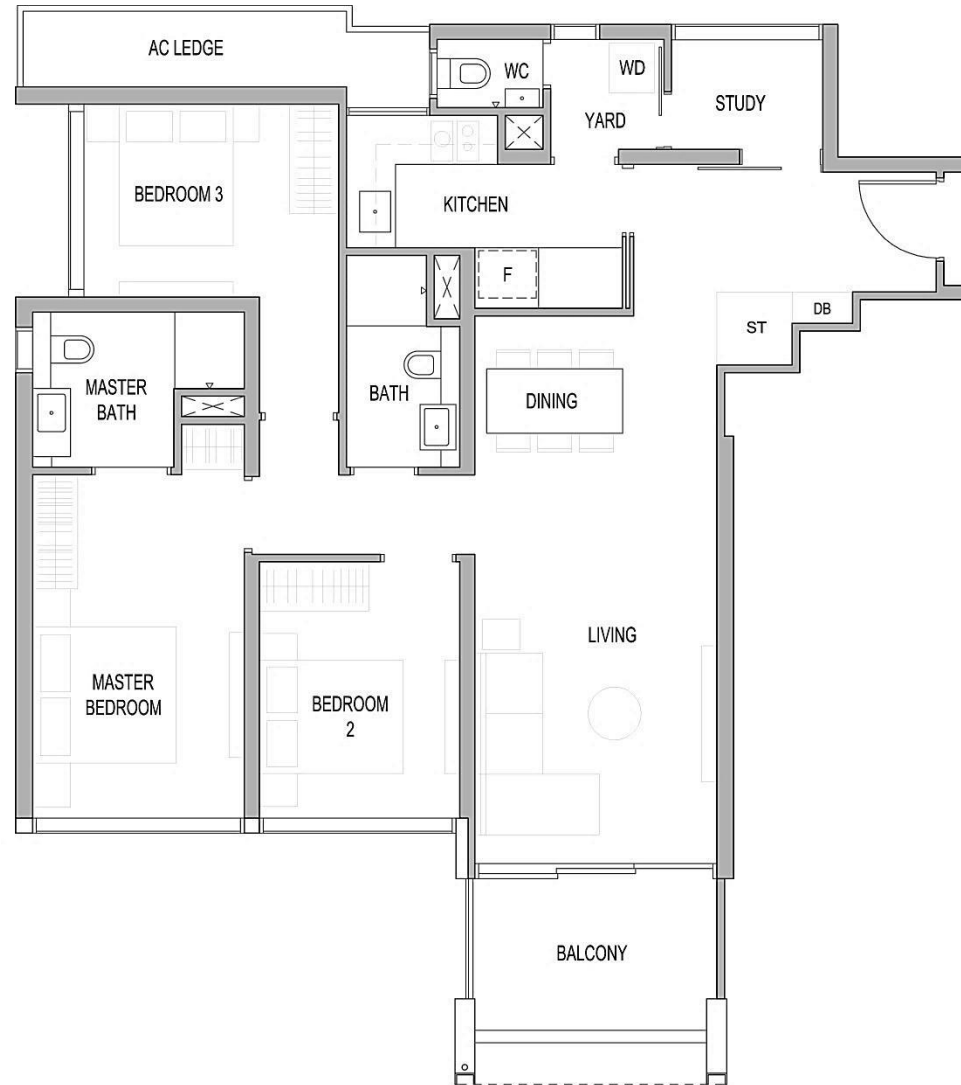
116 sqm / 1249 sqft

**Type C2-2**

#02-04 to #35-04

**Type C2-2(h)**

#36-04 (high ceiling)



Note: Plans are not drawn to scale. The above is subject to change as may be approved by the relevant authorities.

**4 BEDROOM**

186 sqm / 2002 sqft

**Type D1**

#02-08 to #35-08

**Type D1(h)**

#36-08 (high ceiling)



Note: Plans are not drawn to scale. The above is subject to change as may be approved by the relevant authorities.